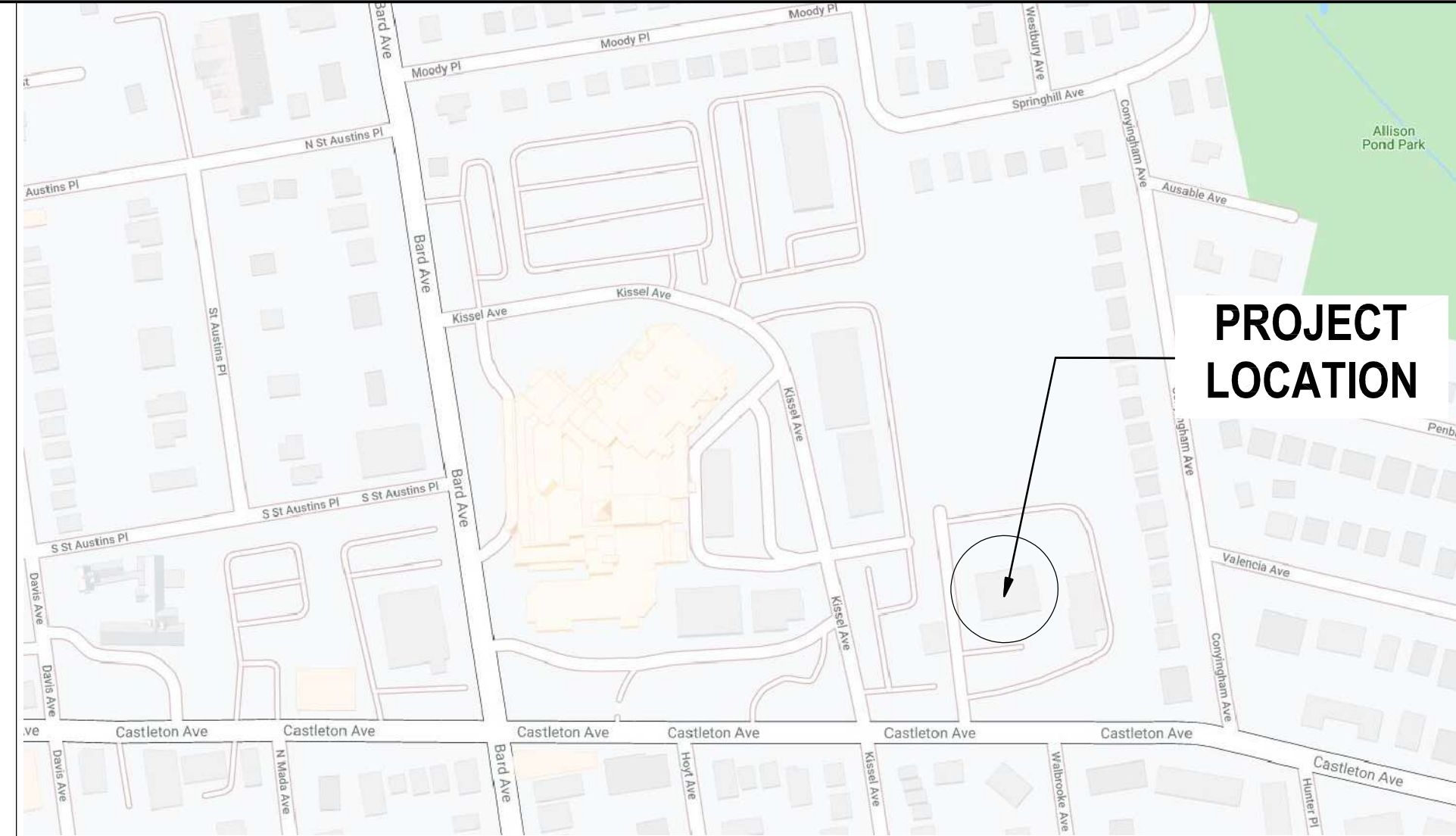


LOCATION MAP

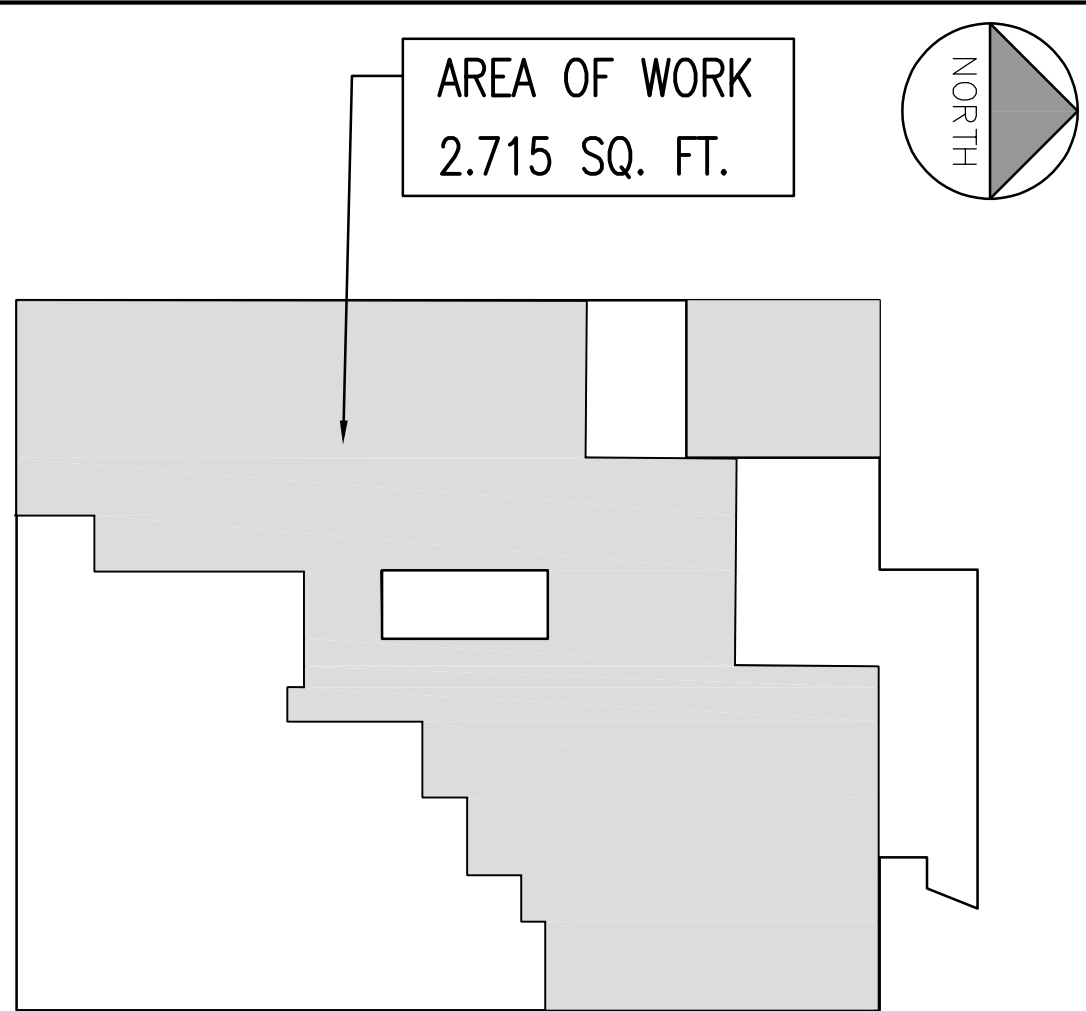


669 CASTLETON AVE, STATEN ISLAND NY 10314

ABBREVIATIONS

Table of abbreviations and their meanings, including terms like ABOVE, ACQUISITION, ACT, ADJUSTABLE, AFF, AL, AP, ATTN, BD, BLDG, BLKG, BTM, BSMT, CAB, CW, CG, CL, CLG, CLOS, CLR, COL, CONC, CONST, CONT, CONST JT, CONTR, CORR, CJ, CMU, DIA, DIM, DN, DF, DWG(S), E, EA, EIFS, EXP JT, EL, EP, EPDM, EQ, EQUIP, EWC, EXIST, EXT, FDN, FEC, FF, FGL, FIN, FL, FLUOR, FO, FRTW, FTG, FUR, FURN, GALV, GC, GFI, GA, GL, GRG, GWB, HC, HCD, HDW, HM, HP, HR, HSKP, HT, HVAC, INSUL, INT, JC, LP, LW, MAINT, MAS, MAX, MDF, MDO, ME, MECH, MEZ, MIN, MFR, MR, MTD, MTL, MWK, N, NIC, NO, NTS, OC, OD, OH, OP, OPG, OPP, PDR, PLAM, PLYWD, PNL, PSGWY, PT, PNT, R, RD, REINF, REOD, RM, RWC, S, SECT, SSTL, SC, SIM, SPEC(S), STD, STL, STOR, STRUCT, TEL, THK, TLT, TOS, TOSL, TOW, TYP, TEMP, UNON, V, VCT, VIF, W, W/OUT, WD, WIN, WP, GAUGE, GLASS, GYPSUM WALL BOARD, HANDICAPPED, HOLLOW CORE DOOR, HARDWARE, HOLLOW METAL, HIGH POINT, HOUR, HOUSE KEEPING, HEIGHT, HEATING, VENTILATING, & AIR CONDITIONING, INSULATION, INTERIOR, JANITOR'S CLOSET, LOW POINT, LIGHT WEIGHT, MAINTENANCE, MASONRY, MAXIMUM, MEDIUM DENSITY FIBERBOARD, MEDIUM DENSITY OVERLAY, MATCH EXISTING, MECHANICAL, MEZZANINE, MINIMUM, MANUFACTURER, MOISTURE RESISTANT, MOUNTED, METAL, MILLWORK, NORTH, NOT IN CONTRACT, NUMBER, NOT TO SCALE, ON CENTER, OUTER DIAMETER, OPPOSITE HAND, OVERFLOW PIPE, OPENING, OPPOSITE, POWDER, PLASTIC LAMINATE, PLYWOOD, PANEL, PASSAGEWAY, PRESSURE TREATED, PAINT(ED), RADIUS, ROOF DRAIN, REINFORCED, REQUIRED, ROOM, RAIN WATER CONDUCTOR, SOUTH, SECTION, STAINLESS STEEL, SOLID CORE, SIMILAR.

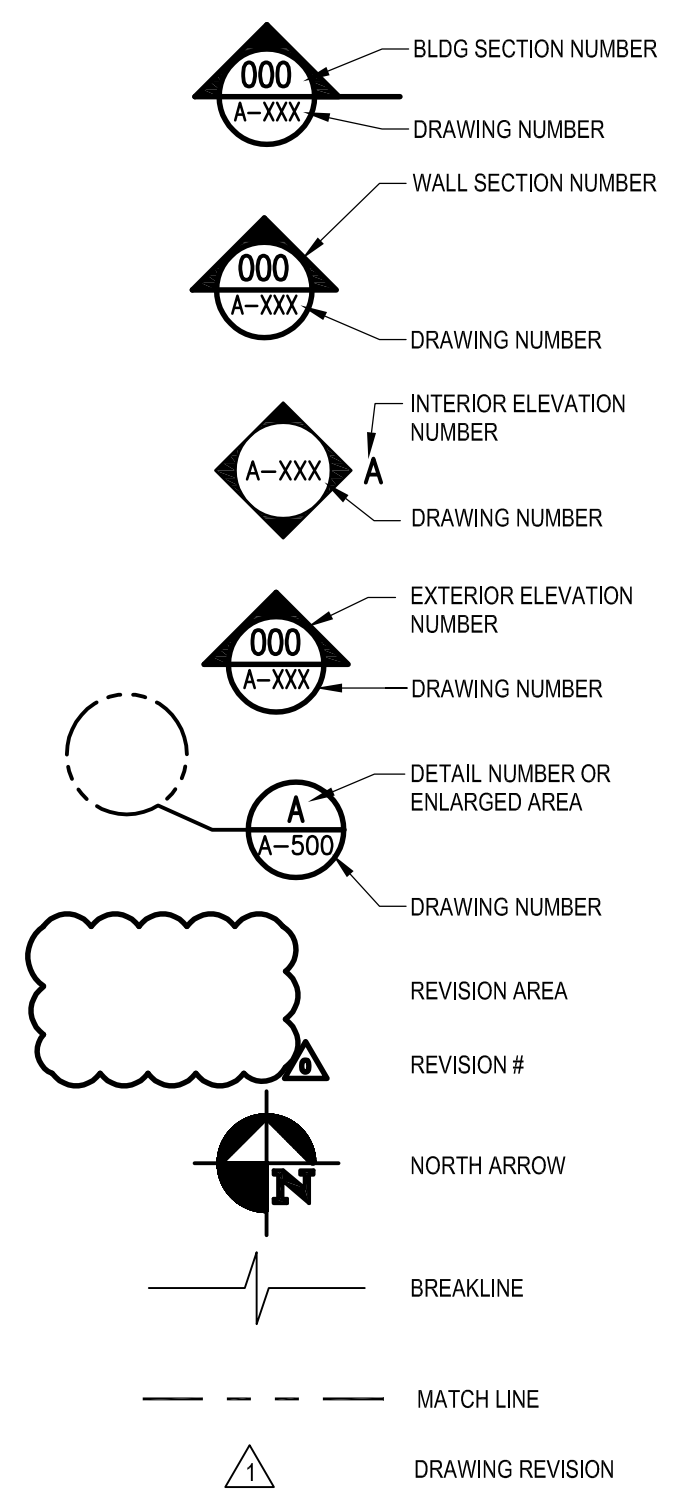
KEY PLAN



APPLICABLE CODES

Table of applicable codes including NFPA LIFE SAFETY CODE 101 (2015), NATIONAL ELECTRICAL CODE (2014), NEW YORK CITY ELECTRICAL CODE (2011), NEW YORK CITY BUILDING CODE (2022), NEW YORK CITY FIRE CODE (2022), NEW YORK CITY ENERGY CONSERVATION CODE (2020), NEW YORK CITY FUEL GAS CODE (2022), NEW YORK CITY MECHANICAL CODE (2022), NEW YORK CITY PLUMBING CODE (2022), ICC / ANS I 117.1 (2009), ADA STANDARDS FOR ACCESSIBLE DESIGN (2010).

GENERAL SYMBOL LEGEND



SPECIAL INSPECTIONS

Table of special inspections including TR-1 - SPECIAL AND PROJECT INSPECTION, PROGRESS INSPECTION CATEGORIES, FIRE-RESISTANT PENETRATIONS AND JOINTS (BC 1704.27), FIRE-RESISTANCE RATED CONSTRUCTION (BC 110.3.4), and FINAL (28-116.2.4.2, 110.5).

PROJECT DESCRIPTION

PROJECT DESCRIPTION: PROPOSED PARTIAL RENOVATION TO SECOND FLOOR TO INTEGRATE A PRIMARY CARE MEDICAL CLINIC INTO AN EXISTING BEHAVIORAL HEALTH PEDIATRIC CLINIC.

PROJECT

PROPOSED SECOND FLOOR RENOVATIONS AND UPGRADES AT RICHMOND UNIVERSITY MEDICAL CENTER 669 CASTLETON AVE, STATEN ISLAND NY 10314 STATEN ISLAND MENTAL HEALTH SOCIETY CHAIT CLINIC OF RUMC STANTEC PROJECT #225300004 TRANSFORMATION GRANT PROJECT #RFA 1607010255

DRAWING LIST

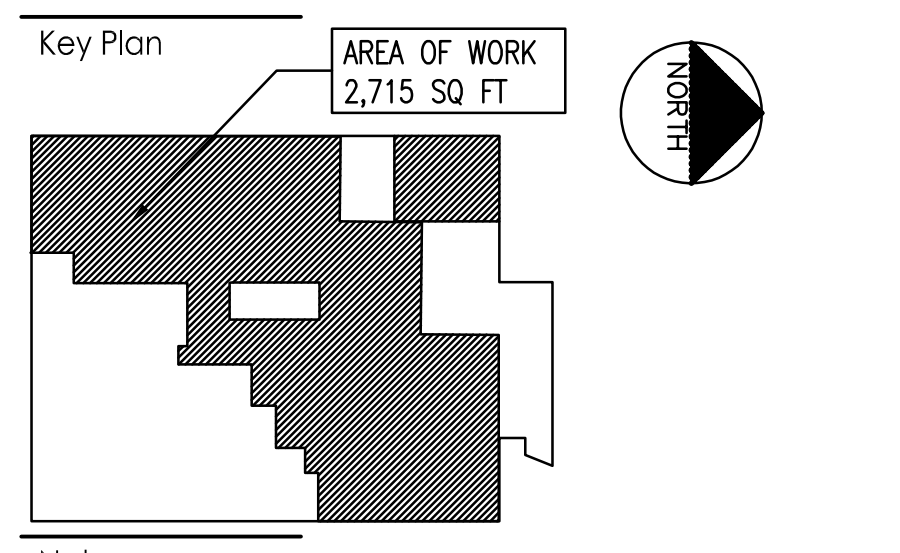
Drawing Index table listing drawing numbers and names, categorized by GENERAL, SITE/CIVIL, ARCHITECTURE, MECHANICAL, ELECTRICAL, FIRE ALARM, PLUMBING, and FIRE PROTECTION.

Stantec logo and contact information: Stantec Consulting Services Inc., 100 Motor Parkway, Suite 420, Hauppauge, N.Y. 11788-4008, Tel. 631.424.8600, www.stantec.com

Copyright Reserved. The Contractor shall verify and be responsible for all dimensions. DO NOT scale the drawing - any errors or omissions shall be reported to Stantec without delay. The Copyrights to all designs and drawings are the property of Stantec. Reproduction or use for any purpose other than that authorized by Stantec is forbidden.

Bohler logo and contact information: Bohler, 2929 Expressway Drive North, Hauppauge, NY 11749, Phone: (631) 738-1200, Fax: (631) 285-4464, www.BohlerEngineering.com

Lizardos logo and contact information: Lizardos Mechanical & Electrical Engineering, 200 Old Country Road, Suite 670, Mineola, NY 11501, Phone: (516) 484-1020, Fax: (516) 484-0926, www.leapc.com



Revision table with columns for Revision, By, Appd., and Date. Includes entries for DCB RUNG, OMEGA ENVIRONMENTAL SERVICES, and CMH FILING.

Permit-Seal area with fields for Client/Project, Title, and Drawing No. Client/Project: RICHMOND UNIVERSITY MEDICAL CENTER TRANSFORMATION GRANT. Title: 669 CASTLETON AVE, STATEN ISLAND, NY SECOND FLOOR PROPOSED RENOVATION.

Project No. 225300004, Drawing No. C-000.00, Scale, Sheet, Revision, and Date 1 of 22.