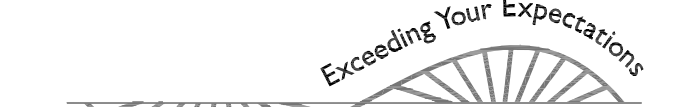


Consultants

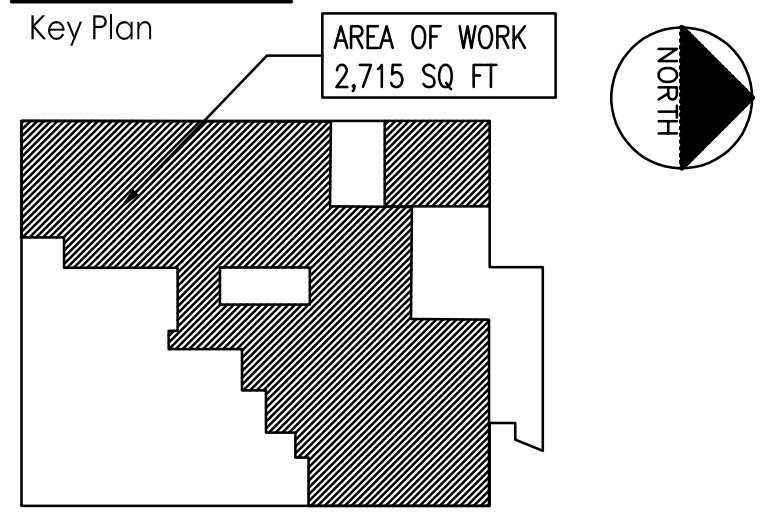
BOHLER

2929 Expressway Drive North
Hauppauge, NY 11749
Phone: (631) 738-1200
Fax: (631) 285-6464
www.BohlerEngineering.com



Lizardos

Mechanical & Electrical Engineering
200 Old Country Road, Suite 670
Mineola, NY 11501
Phone: (516) 484-1020
Fax: (516) 484-0926
www.leapcc.com



Notes

Rev.	Description	By	Appd.	YY.MM.DD

Revision	By	Appd.	YY.MM.DD

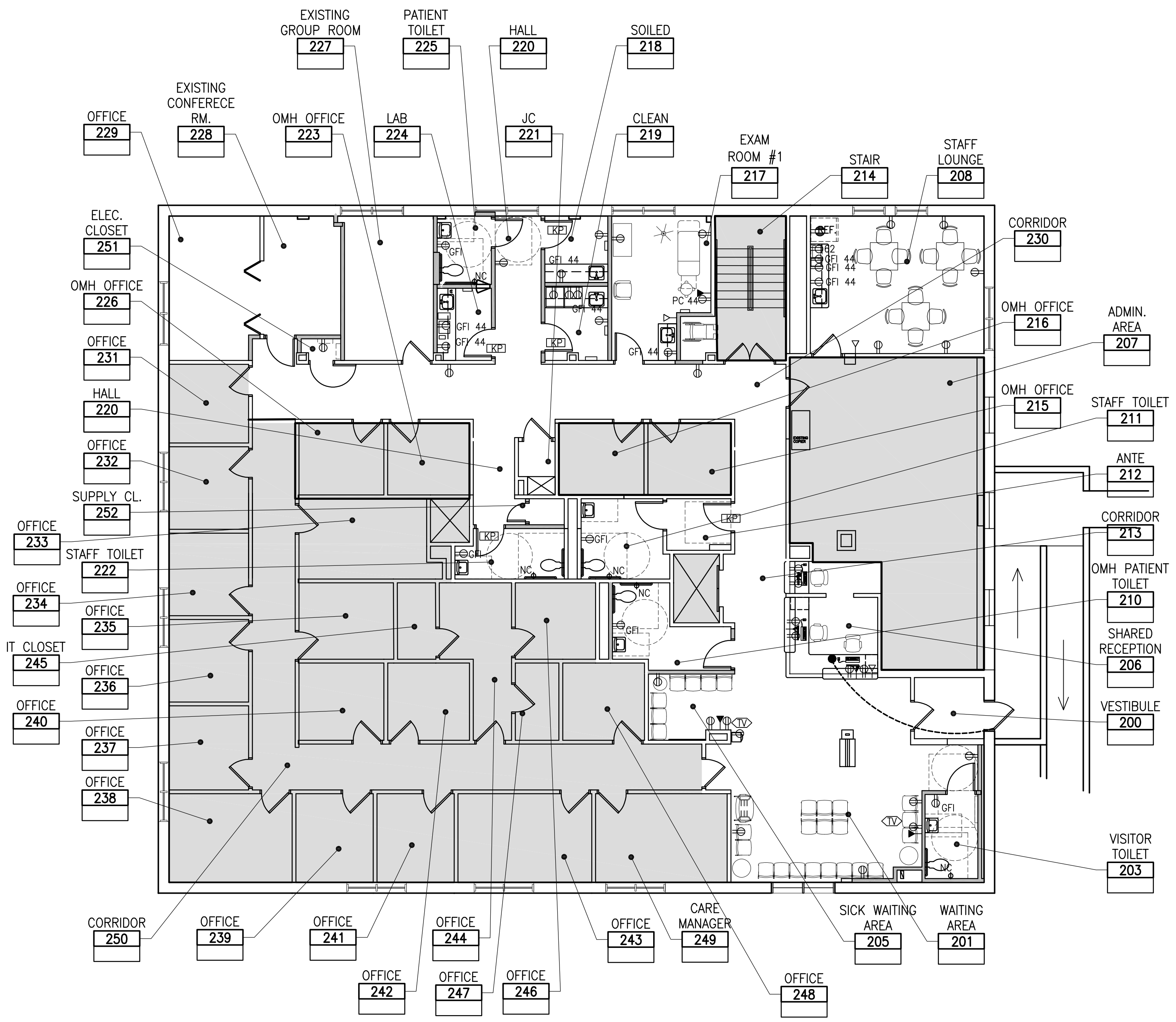
Permit-Seal

Client/Project
RICHMOND UNIVERSITY MEDICAL CENTER
TRANSFORMATION GRANT

669 CASTLETON AVE, STATEN ISLAND, NY
SECOND FLOOR PROPOSED RENOVATION

Title
SECOND FLOOR
POWER & DATA PLAN

Project No.	225300004	Scale	AS NOTED
Drawing No.	Sheet	Revision	



SECOND FLOOR POWER AND DATA PLAN

SCALE: 1/8" = 1'-0"

- LEGEND:**
- CORRIDOR - ROOM NAME
- [8523] - ROOM NUMBER
- ⊕ - DUPLEX RECEPTACLE
- GFI ⊕ - GFI RECEPTACLE
- ⊕ - QUAD RECEPTACLE
- ⊕ - DEDICATED RECEPTACLE
- CLG ⊕ - INDICATES CEILING MOUNTED RECEPTACLE
- 44 ⊕ - DENOTES HEIGHT OF FIN. FLR
- ⓐ - COAXIAL CABLE CONNECTION FOR A/V
- ⓐ - SECURITY CAMERA - 2
- ⊕ with U - RECEPTACLE WITH USB PORT
- ⊕ with T - TRIPLE DATA JACK (TWO DATA, 1 PHONE-CAT 6 WIRING)
- ⊕ with Q - QUAD DATA JACK (TWO DATA, 1 PHONE-CAT 6 WIRING)
- ⊕ with D - DATA OUTLET (RJ45 CAT 6 - BLUE)
- ⊕ with W - WALL TELEPHONE OUTLET
- ⓐ with TV - COAX CABLE FOR TV CONNECTION
- ⓐ with NC - NURSE CALL
- ⓐ with C - INDICATES CLOCK
- ⓐ with DS - NURSE CALL - DUTY STATION
- ⓐ with NT - NURSE TERMINAL
- ⓐ with CR - CARD READER
- ⓐ with KP - KEY PAD
- ⓐ with PP - PUSH PLATE
- ⓐ with [] - EXISTING BUZZER TO CONTROL DOOR
- [] - OUT OF SCOPE

GENERAL NOTES:

- PROVIDE DECORA SWITCH SWITCHES/SWITCHPLATES.
- PROVIDE TAMPER PROOF SCREWS.

J:\225300004\Architecture\Design\drawing\669\000004_A-133-Power & Data Plan.dwg
1/20/2014 12:56:42 PM by: [redacted]