

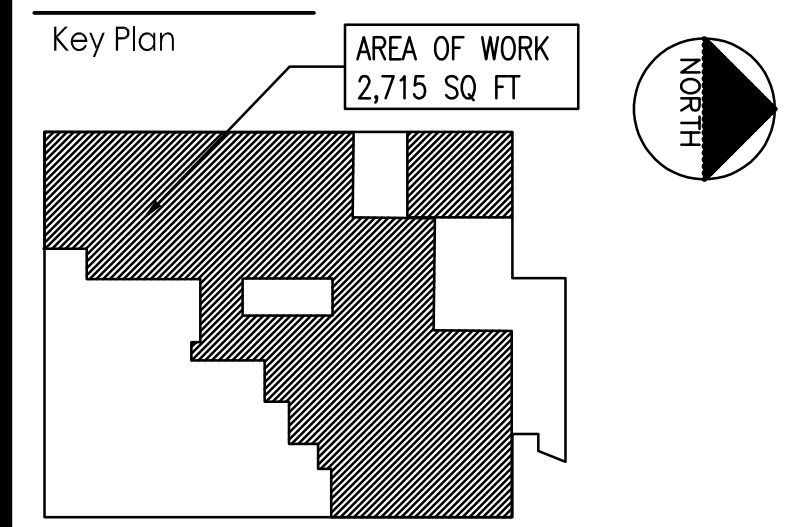
Consultants

**BOHLER** //

2929 Expressway Drive North  
Hauppauge, NY 11749  
Phone: (631) 738-1200  
Fax: (631) 285-6464  
www.BohlerEngineering.com



**Lizardos**  
Mechanical & Electrical Engineering  
200 Old Country Road, Suite 670  
Mineola, NY 11501  
Phone: (516) 484-1020  
Fax: (516) 484-0926  
www.leapc.com



Notes

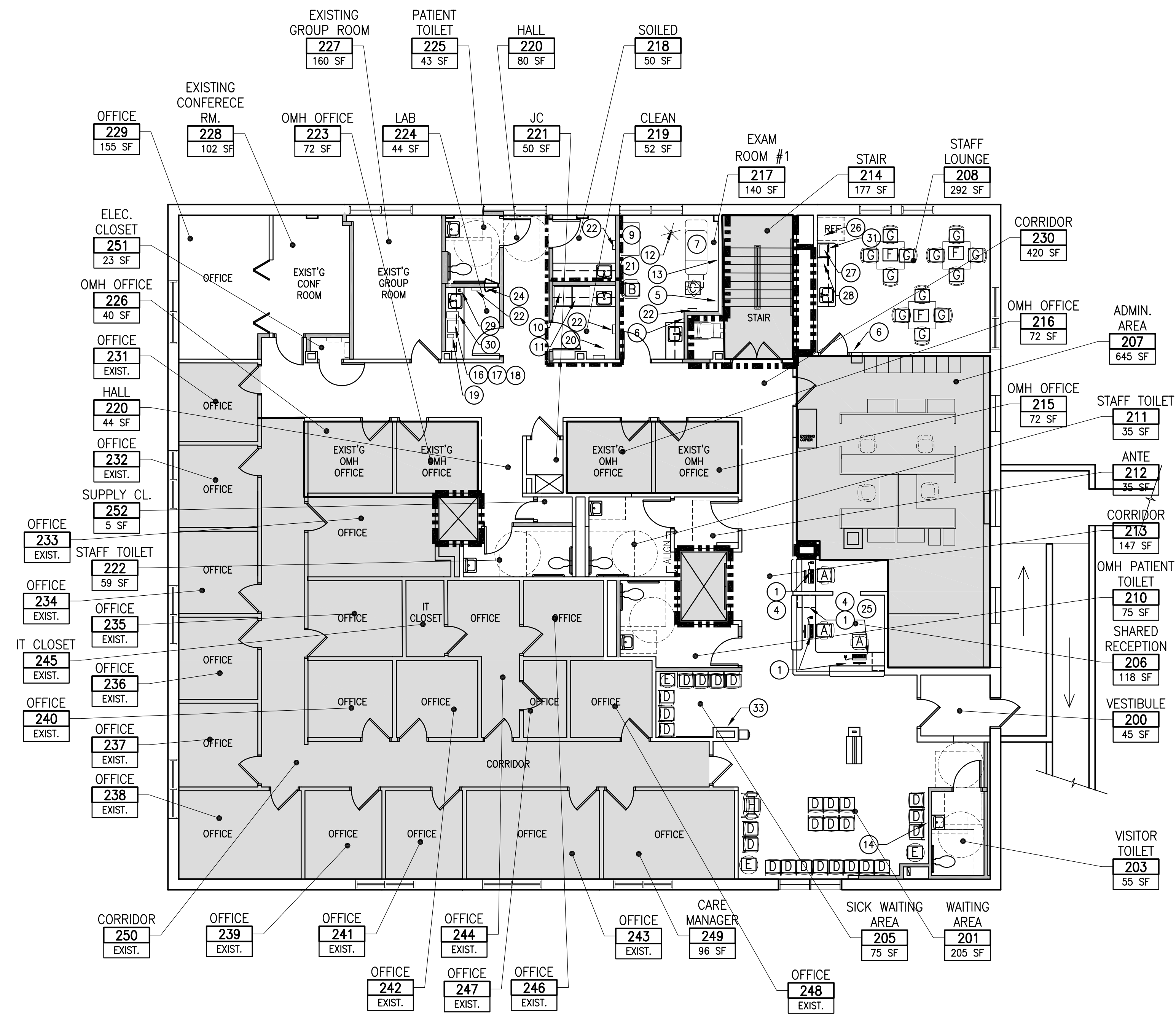
**FURNITURE NOTES:**

1. ALL FURNITURE IN ADMIN AREA 207 IS EXISTING TO REMAIN.
2. SEE EQUIPMENT SCHEDULE FOR ADDITIONAL INFO

**FURNITURE KEY:**

- A TASK CHAIR
- B SIDE CHAIR
- C STOOL
- D WAITING ROOM CHAIR
- E WAITING ROOM SIDE TABLE
- F STAFF LOUNGE TABLE
- G STAFF LOUNGE CHAIR
- H BARIATRIC CHAIR

- OUT OF SCOPE



**SECOND FLOOR EQUIPMENT & FURNITURE PLAN**

SCALE: 1/8" = 1'-0"

Revision	By	Appd.	YY.MM.DD	
DOB HUNG	GM	BD	23.10.16	
OMEGA ENVIRONMENTAL SERVICES	GM	BD	23.05.01	
OMH FILING	GM	BD	22.12.09	
Issued	By	Appd.	YY.MM.DD	
File Name: 000048_A-132 - Equipment And Furniture Plan.dwg	Dwn.	Chkd.	Dgn.	YY.MM.DD

Permit-Seal

Client/Project

RICHMOND UNIVERSITY MEDICAL CENTER  
TRANSFORMATION GRANT

669 CASTLETON AVE, STATEN ISLAND, NY  
SECOND FLOOR PROPOSED RENOVATION

Title

SECOND FLOOR  
FIXTURES, FURNITURE & EQUIPMENT PLAN

Project No.	Scale	
225300004	AS NOTED	
Drawing No.	Sheet	Revision
A-132.00	14	of 22