

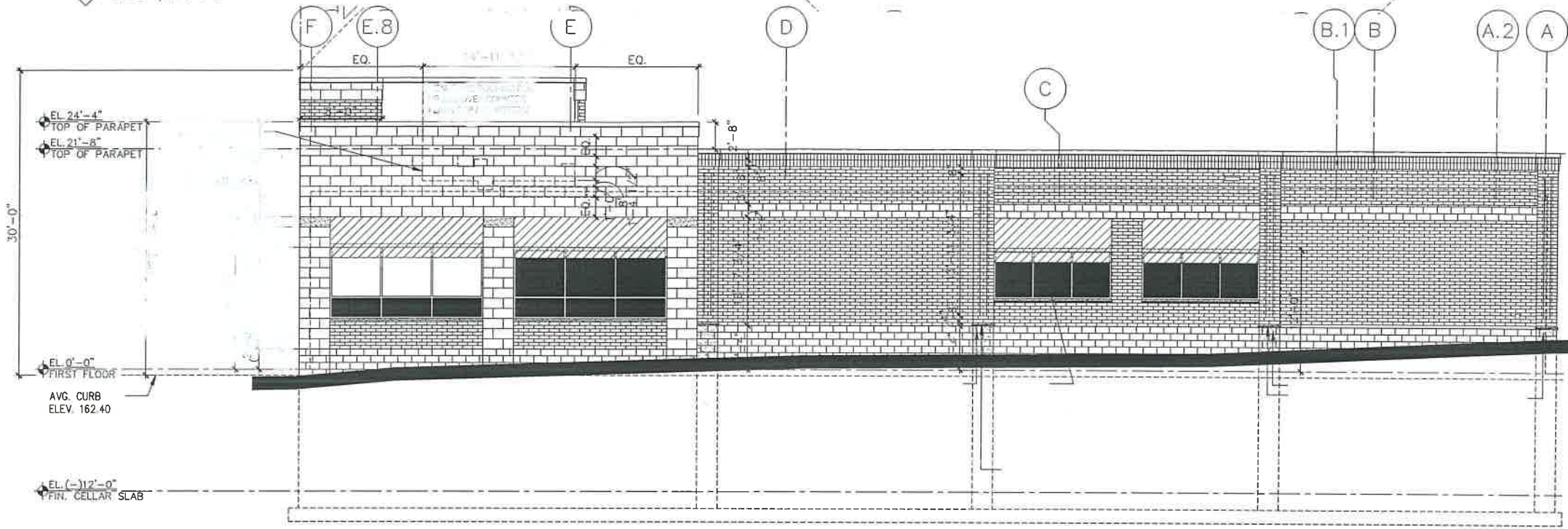
REFER TO LEVEL DRAWINGS.

DOOR THERMAL PERFORMANCE						
Thermal Performance						
1" IGU with LowE						
BTU/hr-ft <sup>2</sup> -°F						
C.O.G U-Factor	0.50	0.28	0.26	0.24	0.22	0.20
2" x 4-1/2"	0.57	0.56	0.34	0.32	0.31	0.29
Testing Standards	NFRC 100					CRF
						Frame Glass
						66 64
						AAMA 1200

EL (-112'-0")  
FIN. CELLAR SLAB

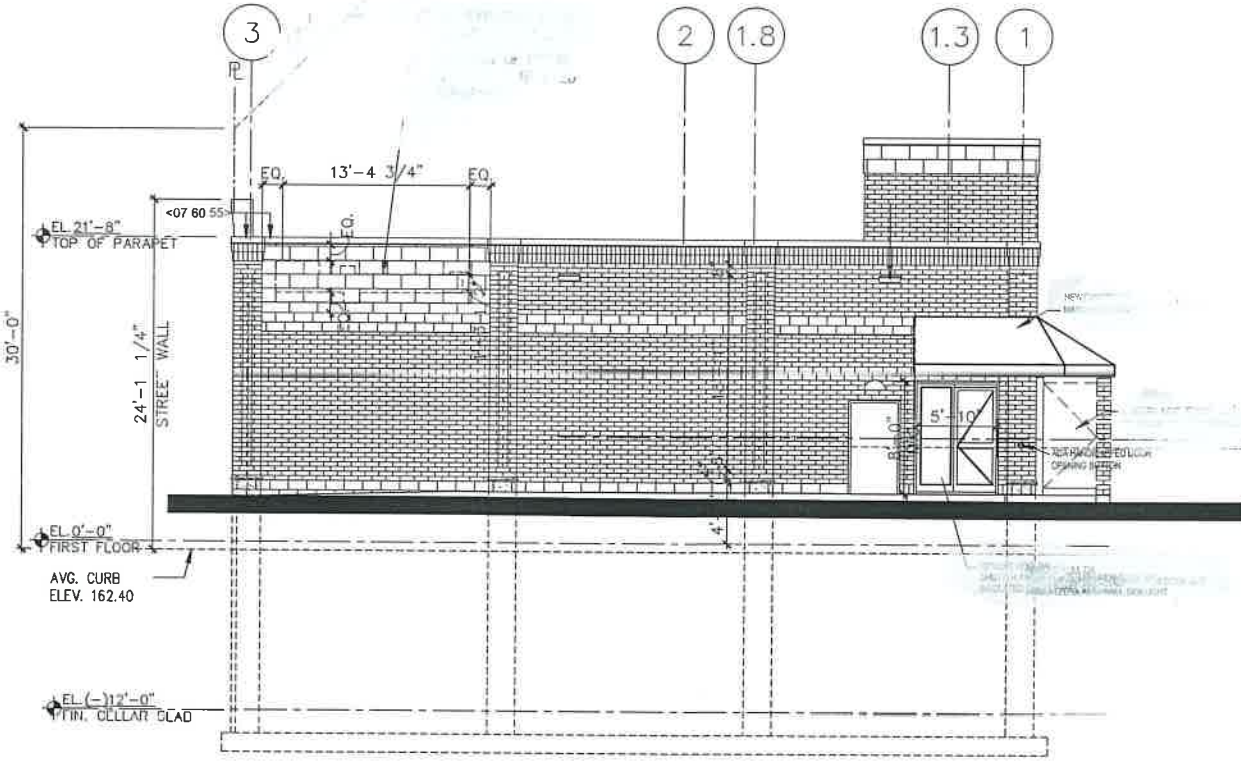
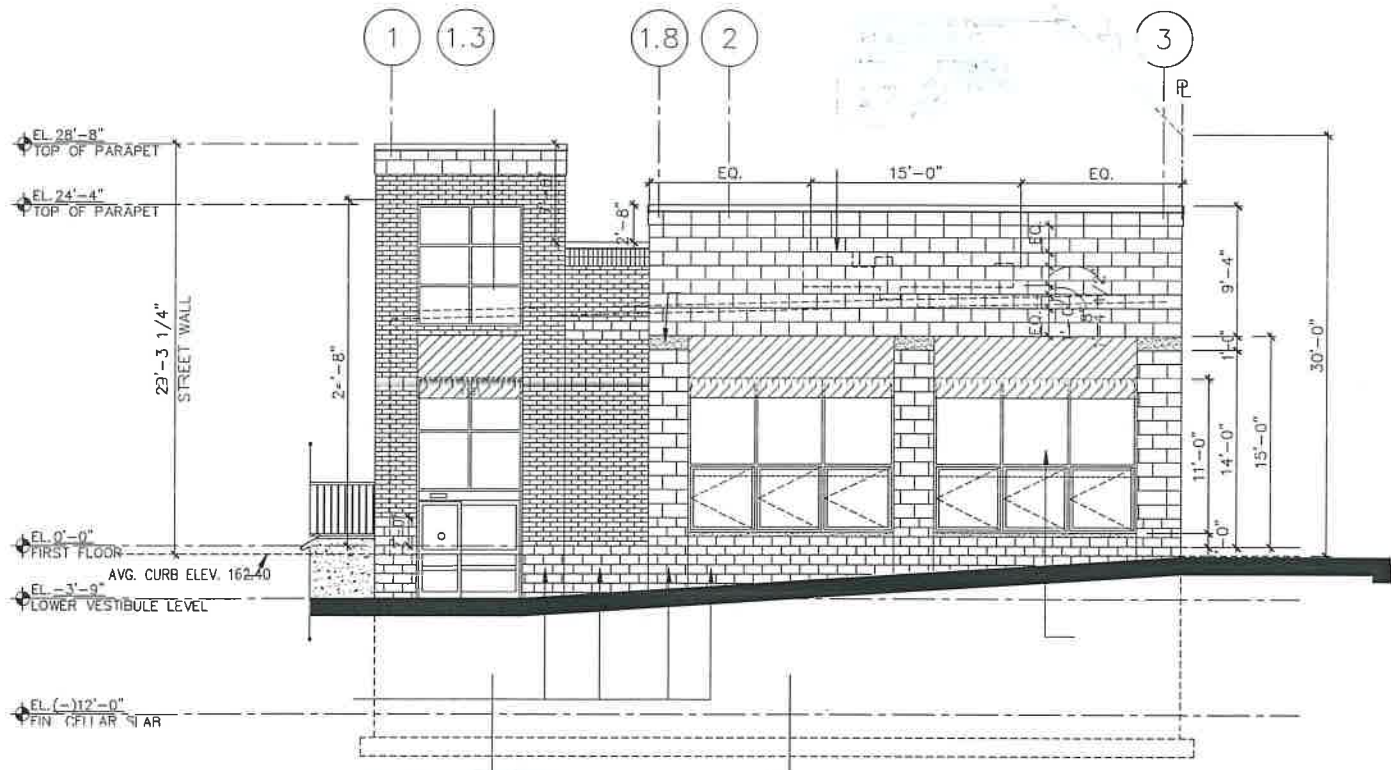
EL (-112'-0")  
FIN. CELLAR SLAB

1 WEST ELEVATION  
SCALE: 1/8" = 1'-0"



**EXISTING BUILDING ELEVATIONS**  
**A-002**  
**(FOR INFO ONLY)**

4 EAST ELEVATION (NO CHANGE)  
SCALE: 1/8" = 1'-0"



2 SOUTH ELEVATION (NO CHANGE)  
SCALE: 1/8" = 1'-0"

3 NORTH ELEVATION  
SCALE: 1/8" = 1'-0"

SKY EXPOSURE PLANE

ENERGY CODE NOTES

- To the best of my (The applicant's) knowledge belief and professional judgment plans and specifications are in compliance with the 2020 New York City energy conservation code.
- Whenever any provision of the energy conservation construction code of the city of New York (ECCNYS) provides for more stringent requirements than that imposed by 2020 EEC, the more stringent requirement shall govern.
- All furnaces, Boiler and hot water heaters to have 90 AFUE min. efficiency for venting and 80 AFUE min. efficiency for natural venting.
- All windows and doors on plans shall have the max. U Factor and Max. SHGC.
- Insulate all water piping. All mechanical duct shall be insulated and seams taped.
- Refer to Energy progress inspection in this sheet for additional information.

GLASS THERMAL PERFORMANCE

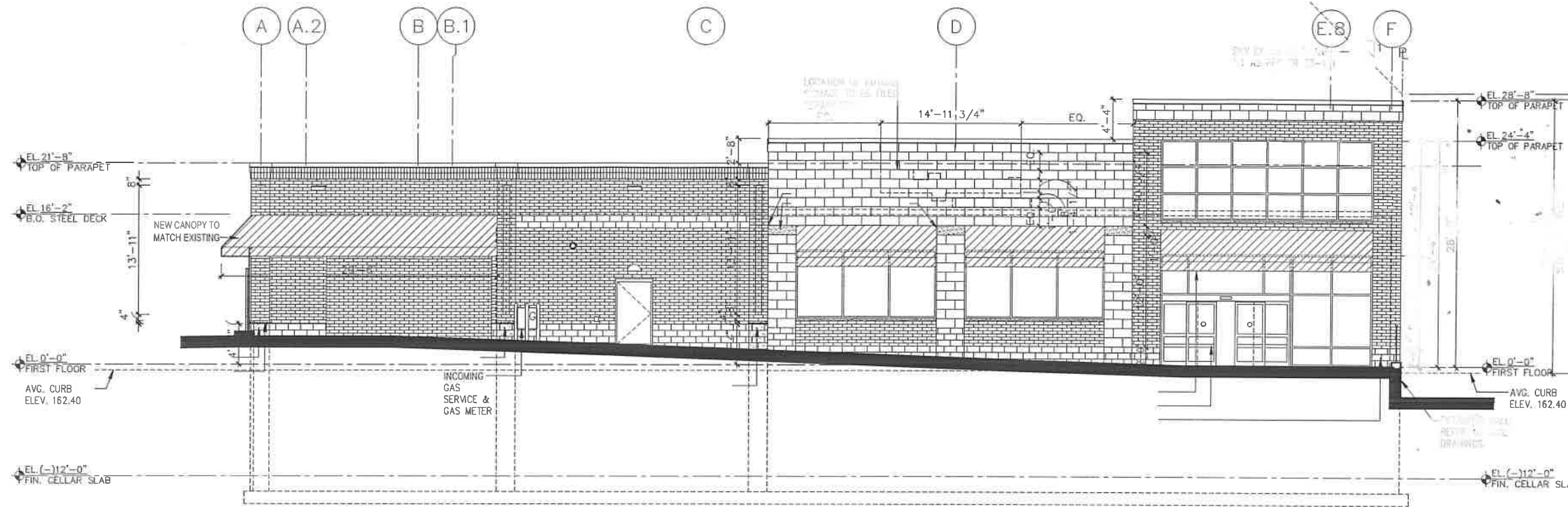
Including Glass Unit Performance Comparisons: 1/2 inch (13mm) units with 1/2 inch (13mm) airspace at 15 degrees angle

Glazing System	U-Factor	SHGC	Visible Light Transmittance (VLT)	Lighting Power Allowance (LPD)	Visible Light Transmittance (VLT)	Visible Light Transmittance (VLT)	Visible Light Transmittance (VLT)
Clear Glass	0.70	0.76	0.76	0.76	0.76	0.76	0.76
Low-E Glass	0.57	0.56	0.54	0.52	0.51	0.29	

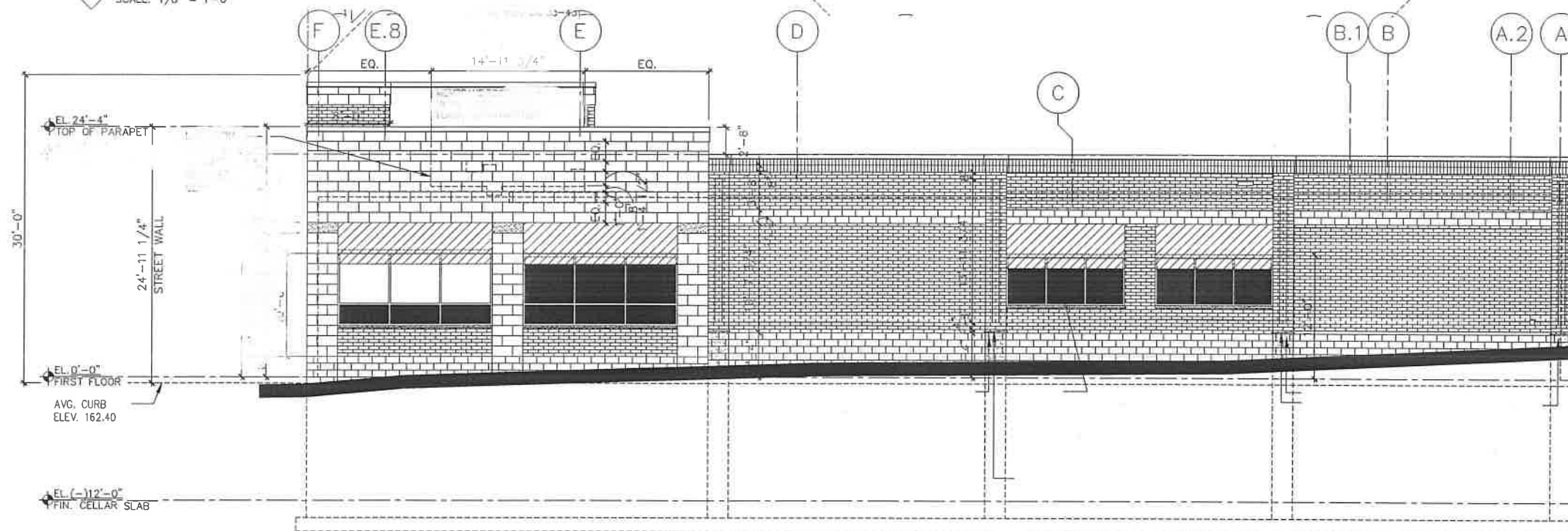
DOOR THERMAL PERFORMANCE

Door Type	Thermal Performance						CRF	
	BTU/hr-ft <sup>2</sup> -F						Frame	Glass
1' JGU with Low-E	0.50	0.28	0.26	0.24	0.22	0.20	66	64
2' x 4-1/2"	0.57	0.56	0.54	0.52	0.51	0.29		

Testing Standards: NFRC 101, AAMA 1303



1 WEST ELEVATION  
SCALE: 1/8" = 1'-0"



4 EAST ELEVATION (NO CHANGE)  
SCALE: 1/8" = 1'-0"

**EXISTING BUILDING ELEVATIONS**  
**A-003**  
**(FOR INFO ONLY)**

